

ACCO SAFETY !!!

□ 2022 NEW COUNTY OFFICER TRAINING

□ ACCO SAFETY TEAM

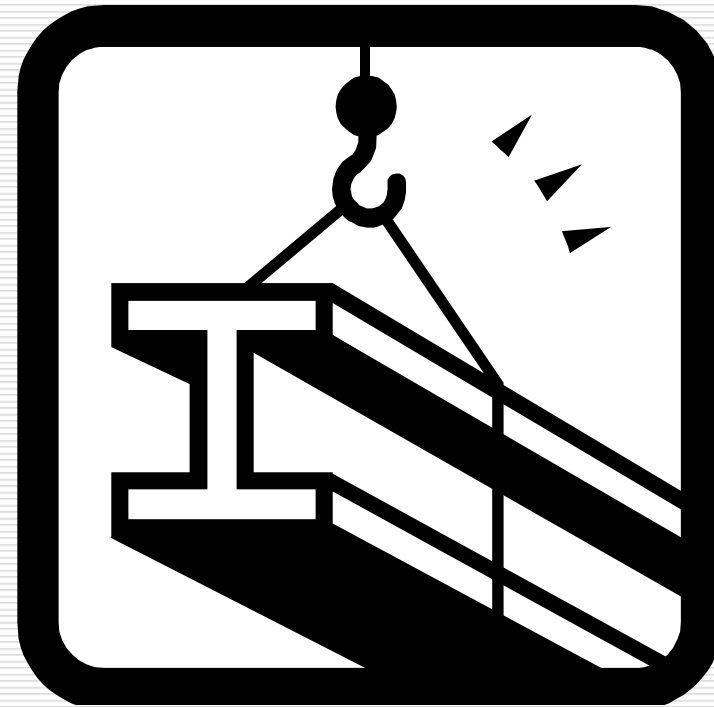
■ DALE FRECH

■ JOE KOERNER

■ DUSTY BIRDSONG

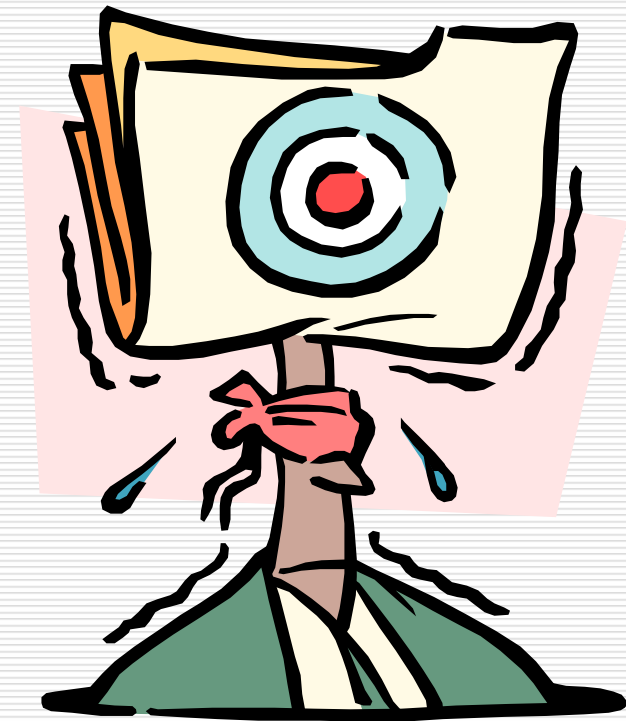
WHAT IS SAFETY?

- ✓ GOING TO WORK AND COMING HOME EVERYDAY WITHOUT INJURY
- ✓ IDENTIFYING AND ELIMINATING JOB HAZARDS
- ✓ PROVIDING A SAFE WORKPLACE FOR ALL EMPLOYEES
- ✓ ENSURING COMPLIANCE WITH ALL SAFETY REGULATIONS



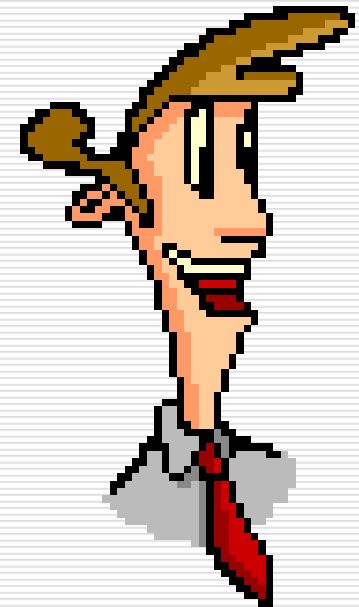
WHAT IS SAFETY?

- ✓ REDUCING THE POTENTIAL FOR LOST WORK TIME AND MEDICAL COSTS
- ✓ BETTER USE OF PUBLIC FUNDS
- ✓ IT IS THE RIGHT THING TO DO



IMPROVE EFFICIENCY

- ❑ **A SAFE, HEALTHY AND HAPPY WORKFORCE PRODUCES GOOD QUALITY OUTPUT**
- ❑ **SAFETY, QUALITY AND PRODUCTIVITY GO HAND IN HAND**



SAFETY PROGRAM

- ✓ SAFETY PROGRAM REQUIRED BY LAW (29 CFR §§ 1910 & 1926 40 OS § 403)
- ✓ INVOLVEMENT BY EVERYONE
- ✓ RESPONSIBILITIES
 - ✓ MANAGEMENT
 - ✓ EMPLOYEES
 - ✓ SAFETY DIRECTORS
- ✓ PROGRAM ONLY AS GOOD AS WEAKEST LINK



ESSENTIAL ELEMENTS OF AN EFFECTIVE SAFETY PROGRAM

- ✓ MANAGEMENT AND EMPLOYEE INVOLVEMENT
 - ✓ WORKSITE ANALYSIS
 - ✓ HAZARD PREVENTION AND CONTROL
 - ✓ SAFETY AND HEALTH TRAINING
-



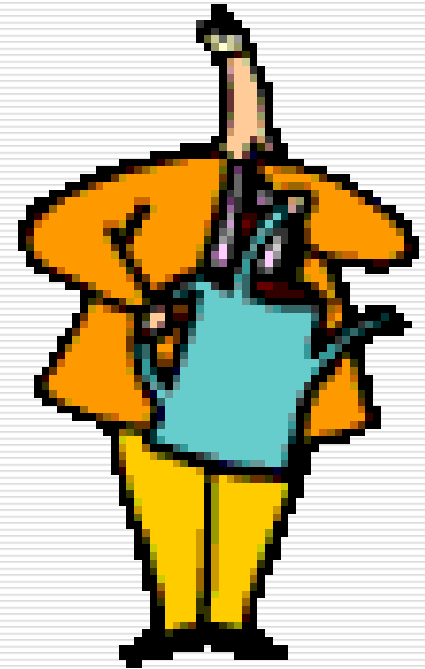
MANAGEMENT RESPONSIBILITY

- ✓ HAVING SAFETY POLICY
- ✓ PROVIDING VISIBLE SAFETY LEADERSHIP
- ✓ GETTING EMPLOYEES INVOLVED
- ✓ PROVIDING ACCOUNTABILITY
- ✓ ASSIGNING RESPONSIBILITY
- ✓ PROVIDING AUTHORITY



SAFETY DIRECTORS RESPONSIBILITIES

- ✓ ASSIST IN DEVELOPMENT OF SAFETY POLICY
- ✓ CONDUCT INSPECTIONS
- ✓ PROVIDE SAFETY TRAINING
- ✓ INCIDENT INVESTIGATION
- ✓ INVESTIGATE EMPLOYEE ENQUIRIES & COMPLAINTS
- ✓ OK 300 AND TRAINING DOCUMENTATION



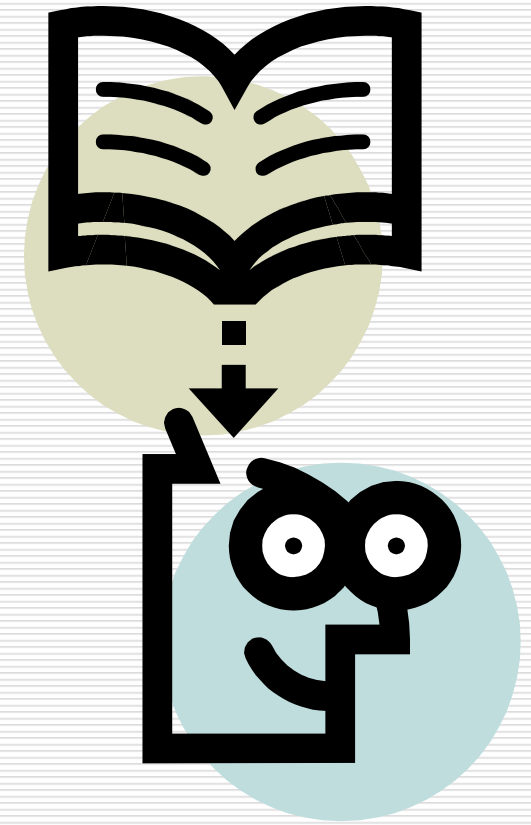
EMPLOYEE RESPONSIBILITIES

- ✓ APPLY SAFETY STANDARDS
- ✓ WEAR PPE
- ✓ STOP OR REPORT ALL UNSAFE PRACTICES
- ✓ REPORT ALL NEAR MISSES
- ✓ ASSIST WITH JOB HAZARD ANALYSIS
- ✓ ATTEND & ASSIST WITH TRAINING



TRAINING

- ✓ MUST BE DONE MINIMUM OF QUARTERLY
- ✓ MOST EFFECTIVE WAY TO KEEP EMPLOYEES SAFETY CONSCIOUS
- ✓ SHOULD BE JOB SPECIFIC
- ✓ SHOULD ADDRESS YOUR PROBLEMS
- ✓ REFER TO SAFETY POLICY

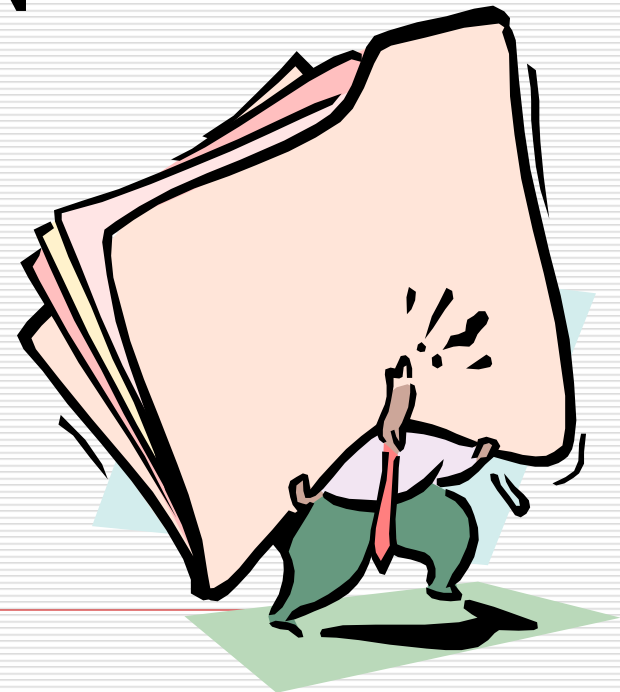


SAVING MONEY.....

FOR EVERY DOLLAR SPENT ON DIRECT COSTS, THERE ARE FOUR TO TEN MORE DOLLARS SPENT ON

□ INDIRECT COSTS.

- LOST PRODUCTIVITY
- LOWER MORAL
- TEMP. HELP
- INSURANCE COSTS



ACCO SAFETY !!!

WHAT DO WE HAVE TO
OFFER MEMBER
COUNTIES?

COUNTY POLICIES

- ✓ PERSONNEL POLICY
- ✓ DRUG AND ALCOHOL TESTING POLICY
- ✓ SAFETY HANDBOOK



ACCO SAFETY

□ SAFETY AWARDS

□ VIDEO LIBRARY

- LAW ENFORCEMENT "IN THE LINE OF DUTY" SERIES
 - LocalGov University
 - COMPSOURCE
-

ACCO SAFETY

- QUARTERLY SAFETY CONFERENCES
 - COUNTY SAFETY PERSONNEL WELCOME
 - TIMELY TOPICS
 - STATEWIDE LOSS ISSUES
 - ERGONOMICS IN THE WORKPLACE
 - DEPARTMENT OF LABOR CHANGES
 - DRIVING SAFETY
 - IMPROVING SAFETY PROGRAMS
-

ACCO SAFETY

LOSS CONTROL

■ COUNTY STATISTICS

LOSSES STATEWIDE

LOSS RUNS FOR YOUR COUNTY

GUIDANCE IN INTERPRETING LOSSES

■ SUBROGATION

DAMAGE RECOVERY



ACCO SAFETY

□ SAFETY INSPECTIONS

- SHOPS
- COURTHOUSE
- SAFETY PROGRAM
- WRITTEN PROGRAMS



ACCO SAFETY

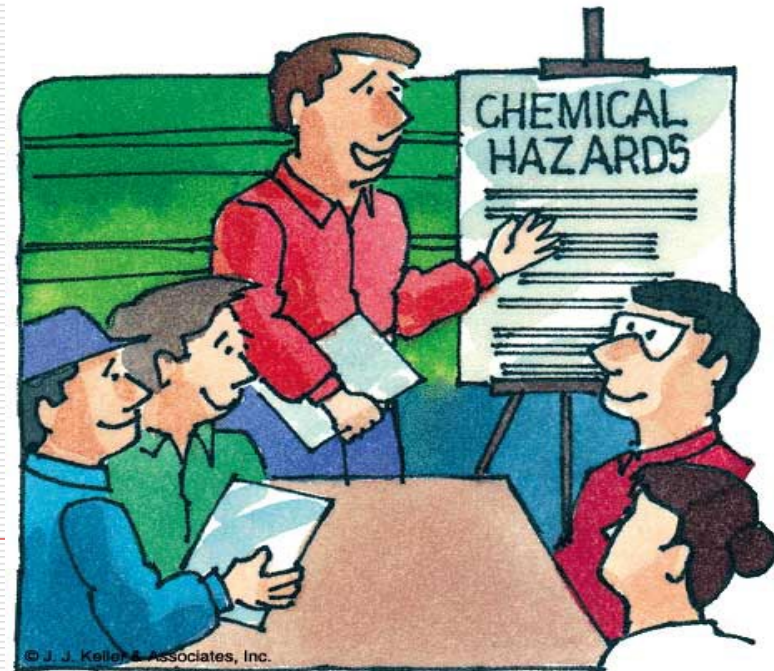
- SAFETY ORIENTATIONS
 - SAFETY DIRECTORS
 - COUNTY OFFICERS
 - EMPLOYEES



ACCO SAFETY

□ SAFETY TALKS

- SPECIAL PROBLEMS
- HIGH # OF INCIDENTS OR LOSSES
- REQUESTS



ACCO SAFETY

ANY QUESTIONS?

